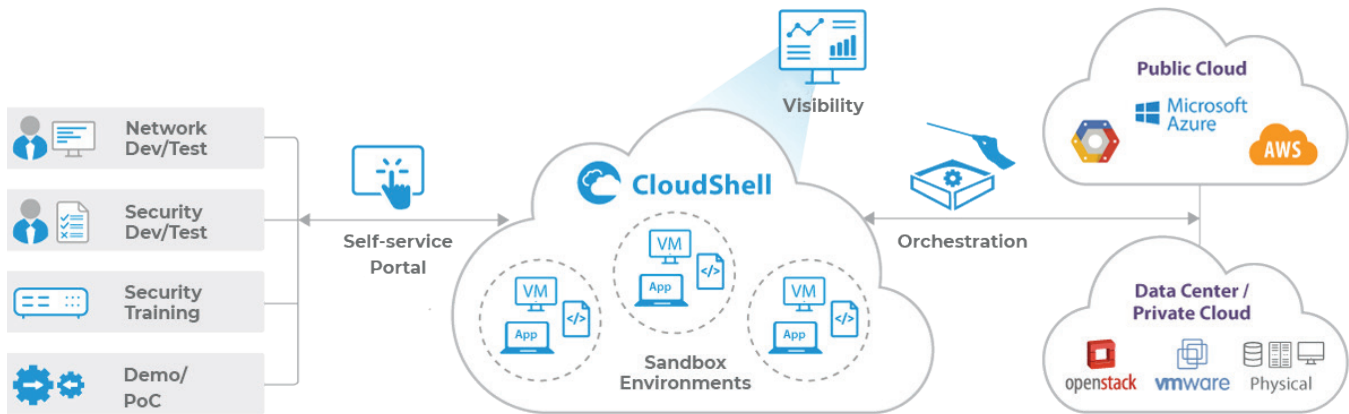


## CLOUDSHELL PRO:

CloudShell Pro accelerates and simplifies environment provisioning by enabling teams to create self-service, on-demand replicas of full-stack infrastructure environments for hybrid cloud configurations in just one click.



## BENEFITS

### Deliver Environments On-Demand

Provide your teams with on-demand, self-service access to the standardized environments they need.

### Increase Efficiency

Increase resource efficiency for physical and virtual assets through lab consolidation and automated tear-downs of unused resources.

### Gain Full Visibility

Increase visibility and control with single pane of glass.

## ENVIRONMENT AS A SERVICE ACROSS YOUR ORGANIZATION

Create replicas of complex infrastructure and application configurations for development, testing, sales demos, training, and support with just one click.



**Slash** your Dev/Test and lab infrastructure cost by **61%**



**Accelerate** your enterprise sales cycles by **22%**

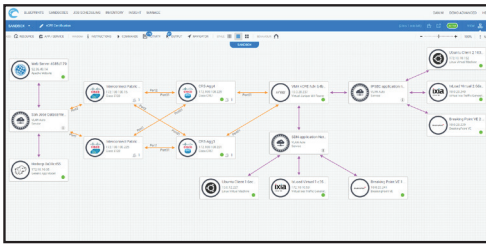


**Spin up** training and test environments in under **1 minute**

*“The ability to spin-up sandboxes for Hybrid cloud deployments with standardized environments and end-to-end visibility can allow development and test teams to make the best use of on premise and public cloud resources, simplify workflows and rollout releases faster with higher quality”*

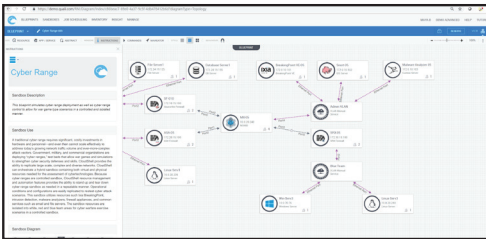
- DevOps and IT Architect, Cisco

## FEATURES



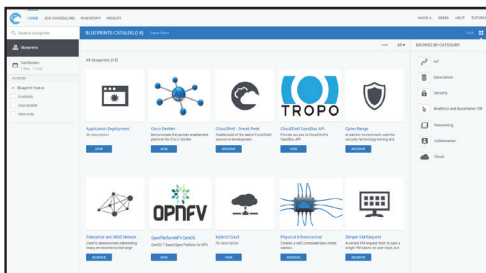
### MODEL INFRASTRUCTURE AND APPLICATIONS

Model complex infrastructure and application environments. Users drag and drop modules to combine physical and virtual infrastructure, network connectivity, applications, and cloud interfaces.



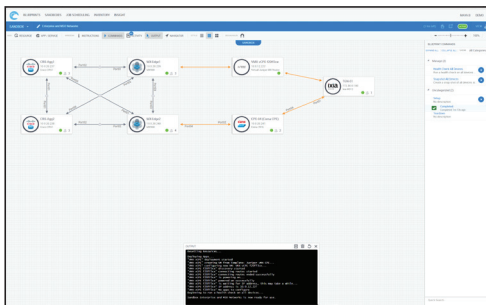
### ORCHESTRATION WORKFLOWS

Use out of the box automated set-up and tear-down capabilities as well as extensible Python libraries to create powerful orchestration workflows inside of sandbox environments. Save and restore environment resources with ease.



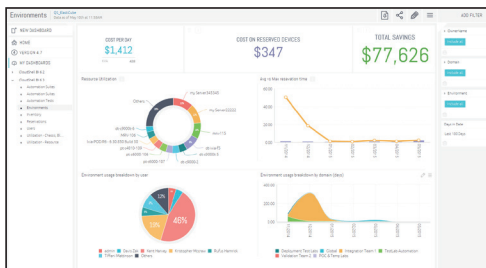
### SELF-SERVICE DEPLOYMENT

One click deployment into sandbox environments. Publish environment blueprints to a shared self-service catalog for on-demand access by all your teams wherever they are.



### SMART MULTI-TENANCY

Create isolated environments while sharing infrastructure and networks without conflict. Infrastructure can be locked or shared with role-based access control (RBAC) for optimal use of resources.



### LAB AUTOMATION AS A SERVICE (LAAS)

Use built-in lab automation and management features like inventory, reservations, scheduling, role-based access control, conflict resolution, and business intelligence. Easily automate multiple labs and share them among hundreds or thousands of engineers.

